

Report No.: AGC2017101600452

Date: Oct.17, 2017

Page 1 of 14

Applicant : Shenzhen Huafului Technology Co., Ltd.
Address : Unit 1401 &1402, 14/F, Jin qi zhi gu mansion (No. 4 building of Chong wen Garden),
Crossing of the Liu xian street and Tang ling road, Tao yuan street, Nan shan district,
Shenzhen, P.R. China

Report on the submitted sample(s) said to be:

Sample Name : Smart Phone
Model : King Kong
Brand : CUBOT
Manufacturers : Shenzhen Huafului Technology Co., Ltd.
Unit 1401 &1402, 14/F, Jin qi zhi gu mansion (No. 4 building of Chong wen
Address : Garden), Crossing of the Liu xian street and Tang ling road, Tao yuan street, Nan shan
district, Shenzhen, P.R. China
Sample Receiving Date : Oct.16, 2017
Testing Period : Oct.16, 2017 to Oct.17, 2017

Test Requested: : Please refer to next page(s).
Test Method : Please refer to next page(s).
Test Result : Please refer to next page(s).

Tested by: Luoxiao

Reviewed by: Leon

Approved by: Lewis

Luoxiao

Suhongliang, Leon

Liulinwen, Lewis

Test Engineer

Test Team Leader

Technical Director



The results shown in this test report refer only to the sample(s) tested unless otherwise stated and the sample(s) are retained for 30 days only. The document is issued by AGC, this document cannot be reproduced except in full with our prior written permission. The more details and the authenticity of the report will be confirmed at <http://www.agc-cert.com>.



Report No.: AGC2017101600452

Date: Oct.17, 2017

Page 2 of 14

Test Requested:

1. As specified by client, to determine the Pb, Cd, Hg, Cr⁶⁺, PBBs, PBDEs content in the submitted sample in accordance with EU RoHS Directive 2011/65/EU(RoHS) and its amendment directives on XRF and Chemical Method.

Conclusion
Pass
Test Methods:

A: Screening by X-ray Fluorescence Spectrometry (XRF) :With reference to IEC 62321-3-1:2013 Ed 1.0

Screening – Lead, mercury, cadmium, total chromium and total bromine by X-ray fluorescence spectrometry

B: Chemical test:

Test Item	Test Method	Measuring Instrument	MDL
Cadmium (Cd)	IEC 62321-5:2013 Ed 1.0 Section 7	ICP-OES	2 mg/kg
Lead (Pb)	IEC 62321-5:2013 Ed 1.0 Section 7	ICP-OES	2 mg/kg
Mercury (Hg)	IEC 62321-4:2013 Ed 1.0 Section 7	ICP-OES	2 mg/kg
Non-metal Hexavalent Chromium (Cr ⁶⁺)	IEC 62321-7-2:2017 Ed 1.0	UV-Vis	1 mg/kg
Metal Hexavalent Chromium (Cr ⁶⁺)	IEC 62321-7-1:2015 Ed 1.0	UV-Vis	/
PBBs/PBDEs	IEC 62321-6:2015 Ed 1.0	GC-MS	5 mg/kg

The results shown in this test report refer only to the sample(s) tested unless otherwise stated and the sample(s) are retained for 30 days only. The document is issued by AGC, this document cannot be reproduced except in full with our prior written permission. The more details and the authenticity of the report will be confirmed at <http://www.agc-cert.com>.



Report No.: AGC2017101600452

Date: Oct.17, 2017

Page 3 of 14

Test Results:
A: EU RoHS Directive 2011/65/EU and its amendment directives on XRF

Seq. No.	Tested Part(s)	Results(mg/kg)				
		Cd	Pb	Hg	Cr	Br
1	Black plastic	BL	BL	BL	BL	BL
2	Orange plastic	BL	BL	BL	BL	BL
3	Transparent plastic	BL	BL	BL	BL	BL
4	Yellow metal	BL	OL*	BL	BL	-
5	Label paper	BL	BL	BL	BL	BL
6	Label paper	BL	BL	BL	BL	BL
7	Gray metal	BL	X*	BL	BL	-
8	Yellow metal	BL	BL	BL	BL	-
9	White plastic	BL	BL	BL	BL	BL
10	Silvery metal	BL	OL*	BL	BL	-
11	Glass mirror	BL	BL	BL	BL	BL
12	White plastic	BL	BL	BL	BL	BL
13	Display screen	BL	BL	BL	BL	BL
14	Silvery metal	BL	BL	BL	BL	-
15	Silvery plastic film	BL	BL	BL	BL	BL
16	White plastic	BL	BL	BL	BL	BL
17	Transparent plastic sheet	BL	BL	BL	BL	BL
18	Transparent plastic film	BL	BL	BL	BL	BL
19	Silvery plastic film	BL	BL	BL	BL	BL
20	Transparent plastic film	BL	BL	BL	BL	BL
21	Black plastic tape	BL	BL	BL	BL	BL
22	Silvery metal	BL	BL	BL	BL	-
23	Gray adhesive fabric	BL	BL	BL	BL	BL
24	Golden plastic tape	BL	BL	BL	BL	BL
25	Black plastic	BL	BL	BL	BL	BL

The results shown in this test report refer only to the sample(s) tested unless otherwise stated and the sample(s) are retained for 30 days only. The document is issued by AGC, this document cannot be reproduced except in full with our prior written permission. The more details and the authenticity of the report will be confirmed at <http://www.agc-cert.com>.



Seq. No.	Tested Part(s)	Results(mg/kg)				
		Cd	Pb	Hg	Cr	Br
26	Black plastic	BL	BL	BL	BL	BL
27	Silvery metal	BL	BL	BL	BL	-
28	Black metal setscrew	BL	BL	BL	BL	-
29	Brown plastic	BL	BL	BL	BL	BL
30	Silvery gray metal	BL	BL	BL	BL	-
31	Yellow metal	BL	BL	BL	BL	-
32	PCB	BL	BL	BL	BL	BL
33	Transparent yellow plastic adhesive tape	BL	BL	BL	BL	BL
34	Red plastic wire cover	BL	BL	BL	BL	BL
35	Black plastic	BL	BL	BL	BL	BL
36	Black sponge	BL	BL	BL	BL	BL
37	Silvery metal	BL	BL	BL	BL	-
38	Silvery metal	BL	BL	BL	BL	-
39	Resistance	BL	BL	BL	BL	BL
40	Silvery metal	BL	BL	BL	BL	-
41	Soldering tin	BL	BL	BL	BL	-
42	Black plastic wire cover	BL	BL	BL	BL	BL
43	Black plastic	BL	BL	BL	BL	BL
44	White plastic	BL	BL	BL	BL	BL
45	Black plastic	BL	BL	BL	BL	BL
46	Silvery metal plug	BL	BL	BL	BL	-
47	Black plastic	BL	BL	BL	BL	BL
48	Silvery metal	BL	BL	BL	BL	-
49	Silvery metal	BL	BL	BL	BL	-
50	Silvery metal	BL	BL	BL	BL	-
51	White plastic	BL	BL	BL	BL	BL

The results shown in this test report refer only to the sample(s) tested unless otherwise stated and the sample(s) are retained for 30 days only. The document is issued by AGC, this document cannot be reproduced except in full with our prior written permission. The more details and the authenticity of the report will be confirmed at <http://www.agc-cert.com>.



Seq. No.	Tested Part(s)	Results(mg/kg)				
		Cd	Pb	Hg	Cr	Br
52	Silvery metal	BL	BL	BL	BL	-
53	Black plastic	BL	BL	BL	BL	BL
54	Silvery metal	BL	BL	BL	BL	-
55	Silvery metal	BL	BL	BL	BL	-
56	Black plastic	BL	BL	BL	BL	BL
57	White plastic	BL	BL	BL	BL	BL
58	PCB	BL	BL	BL	BL	BL
59	Black plastic	BL	BL	BL	BL	BL
60	Golden plastic tape	BL	BL	BL	BL	BL
61	Silvery metal	BL	BL	BL	BL	-
62	Black plastic	BL	BL	BL	BL	BL
63	Black plastic	BL	BL	BL	BL	BL
64	Dark gray plastic	BL	BL	BL	BL	BL
65	Silvery metal	BL	BL	BL	BL	-
66	Black plastic	BL	BL	BL	BL	BL
67	Black plastic	BL	BL	BL	BL	BL
68	Resistance	BL	BL	BL	BL	BL
69	Label paper	BL	BL	BL	BL	BL
70	Silvery metal	BL	BL	BL	BL	-
71	Silvery metal	BL	BL	BL	BL	-
72	Black plastic	BL	BL	BL	BL	BL
73	Dark gray soild	BL	BL	BL	BL	BL
74	Black plastic	BL	BL	BL	BL	BL
75	Dark gray adhesive fabric	BL	BL	BL	BL	BL
76	Resistance	BL	BL	BL	BL	BL
77	PCB	BL	BL	BL	BL	BL

The results shown in this test report refer only to the sample(s) tested unless otherwise stated and the sample(s) are retained for 30 days only. The document is issued by AGC, this document cannot be reproduced except in full with our prior written permission. The more details and the authenticity of the report will be confirmed at <http://www.agc-cert.com>.



Seq. No.	Tested Part(s)	Results(mg/kg)				
		Cd	Pb	Hg	Cr	Br
78	Golden plastic tape	BL	BL	BL	BL	BL
79	Aluminum foil	BL	BL	BL	BL	BL
80	Label paper	BL	BL	BL	BL	BL
81	Silvery metal	BL	BL	BL	BL	-
82	Silvery metal	BL	BL	BL	BL	-
83	Black plastic	BL	BL	BL	BL	BL
84	Black plastic	BL	BL	BL	BL	BL
85	White plastic	BL	BL	BL	BL	BL
86	White plastic wire cover	BL	BL	BL	BL	BL
87	White plastic	BL	BL	BL	BL	BL
88	White plastic	BL	BL	BL	BL	BL
89	Silvery metal plug	BL	BL	BL	BL	-
90	Silvery metal plug	BL	BL	BL	BL	-
91	White plastic	BL	BL	BL	BL	BL
92	Soldering tin	BL	BL	BL	BL	-
93	White plastic wire cover	BL	BL	BL	BL	BL
94	Silvery metal wire	BL	BL	BL	BL	-
95	Yellow metal	BL	BL	BL	BL	-
96	Light blue plastic wire cover	BL	BL	BL	BL	BL
97	Silvery metal	BL	BL	BL	BL	-
98	Soldering tin	BL	BL	BL	BL	-
99	Black plastic	BL	BL	BL	BL	BL
100	Silvery metal plug	BL	BL	BL	BL	-
101	White plastic	BL	BL	BL	BL	BL
102	Black painting	BL	BL	BL	BL	BL
103	White plastic	BL	BL	BL	BL	BL

The results shown in this test report refer only to the sample(s) tested unless otherwise stated and the sample(s) are retained for 30 days only. The document is issued by AGC, this document cannot be reproduced except in full with our prior written permission. The more details and the authenticity of the report will be confirmed at <http://www.agc-cert.com>.



Seq. No.	Tested Part(s)	Results(mg/kg)				
		Cd	Pb	Hg	Cr	Br
104	Red metal wire	BL	BL	BL	BL	-
105	Soldering tin	BL	BL	BL	BL	-
106	Black plastic	BL	BL	BL	BL	X*
107	Black plastic	BL	BL	BL	BL	BL
108	Black plastic	BL	BL	BL	BL	BL
109	Resistance	BL	BL	BL	BL	BL
110	Resistance	BL	BL	BL	BL	BL
111	PCB	BL	BL	BL	BL	BL
112	Capacitance	BL	BL	BL	BL	BL
113	Black plastic	BL	BL	BL	BL	BL
114	Black plastic	BL	BL	BL	BL	BL
115	Silvery metal	BL	BL	BL	BL	-
116	Black plastic	BL	BL	BL	BL	BL
117	Silvery metal plug	BL	BL	BL	BL	-
118	Light yellow adhesive tape	BL	BL	BL	BL	BL
119	Black plastic	BL	BL	BL	BL	BL
120	White soild	BL	BL	BL	BL	BL
121	Capacitance	BL	BL	BL	BL	BL
122	Silvery metal	BL	BL	BL	BL	-
123	Green soild	BL	BL	BL	BL	BL
124	Silvery metal	BL	BL	BL	BL	-
125	Silvery metal setscrew	BL	BL	BL	BL	-
126	Black metal setscrew	BL	BL	BL	BL	-
127	Black metal setscrew	BL	BL	BL	BL	-
128	Black plastic	BL	BL	BL	BL	BL
129	Mobile phone side key	BL	BL	BL	BL	-

The results shown in this test report refer only to the sample(s) tested unless otherwise stated and the sample(s) are retained for 30 days only. The document is issued by AGC, this document cannot be reproduced except in full with our prior written permission. The more details and the authenticity of the report will be confirmed at <http://www.agc-cert.com>.



Seq. No.	Tested Part(s)	Results(mg/kg)				
		Cd	Pb	Hg	Cr	Br
130	Black plastic wire cover	BL	BL	BL	BL	BL
131	Yellow metal	BL	BL	BL	BL	-
132	Black plastic	BL	BL	BL	BL	BL
133	Silvery metal	BL	BL	BL	BL	-
134	Black plastic	BL	BL	BL	BL	BL
135	Silvery metal setscrew	BL	BL	BL	BL	-
136	Silvery metal setscrew	BL	BL	BL	BL	-

Element	Unit	Non-metal	Metal	Composite Material
Cd	mg/kg	BL≤70-3σ<X <130+3σ≤OL	BL≤70-3σ<X <130+3σ≤OL	BL≤50-3σ<X <150+3σ≤OL
Pb	mg/kg	BL≤700-3σ<X <1300+3σ≤OL	BL≤700-3σ<X <1300+3σ≤OL	BL≤500-3σ<X <1500+3σ≤OL
Hg	mg/kg	BL≤700-3σ<X <1300+3σ≤OL	BL≤700-3σ<X <1300+3σ≤OL	BL≤500-3σ<X <1500+3σ≤OL
Cr	mg/kg	BL≤700-3σ<X	BL≤700-3σ<X	BL≤500-3σ<X
Br	mg/kg	BL≤300-3σ<X	-	BL≤250-3σ<X

Note: BL= Below Limit
 OL= Over limited
 X= Inconclusive
 “-“= Not regulated

*= Scanning by XRF and detected by chemical method. The test results of chemical method please refer to next pages.

The results shown in this test report refer only to the sample(s) tested unless otherwise stated and the sample(s) are retained for 30 days only. The document is issued by AGC, this document cannot be reproduced except in full with our prior written permission. The more details and the authenticity of the report will be confirmed at <http://www.agc-cert.com>.



Report No.: AGC2017101600452

Date: Oct.17, 2017

Page 9 of 14

Remark:

- i Results were obtained by XRF for primary scanning, and further chemical testing by ICP (for Cd, Pb, Hg), UV-Vis (for Cr(VI)) and GC-MS (for PBBs, PBDEs) are recommended to be performed, if the concentration exceeds the above warning value according to IEC 62321-3-1:2013 Ed 1.0.
- ii The XRF scanning test for RoHS elements – The reading may be different to the actual content in the sample be of non-uniformity composition.
- iii The maximum permissible limit is quoted from RoHS directive 2011/65/EU:

RoHS Restricted Substances	Maximum Concentration Value (mg/kg) (by weight in homogenous materials)
Cadmium (Cd)	100
Lead (Pb)	1000
Mercury (Hg)	1000
Hexavalent Chromium (Cr(VI))	1000
Polybrominated biphenyls (PBBs)	1000
Polybrominated diphenylethers (PBDEs)	1000

Disclaimers:

This XRF Scanning report is for reference purposes only. The applicant shall make its/his/her own judgment as to whether the information provided in this XRF screening report is sufficient for its/his/her purposes.

The result shown in this XRF scanning report will differ based on various factors, including but not limited to, the sample size, thickness, area, surface flatness, equipment parameters and matrix effect (e.g. plastic, rubber, metal, glass, ceramic etc.). Further wet chemical pre-treatment with relevant chemical equipment analysis are required to obtain quantitative data.

B. The Test Results of Chemical Method:

1. The Test Results of Pb :

Test Item(s)	Unit	Result(s)		
		*4	7	*10
Lead(Pb)	mg/kg	27000	576	27600

Note: N.D. = Not Detected or less than MDL

MDL = Method Detection Limit

*= As claimed by the material declaration submitted by the client, the materials of the sample No.4, No.10 are copper alloy, according to the RoHS 2011/65/EU, Lead is exempted as an alloying element in Copper containing up to 4% (40000ppm) by weight.

The results shown in this test report refer only to the sample(s) tested unless otherwise stated and the sample(s) are retained for 30 days only. The document is issued by AGC, this document cannot be reproduced except in full with our prior written permission. The more details and the authenticity of the report will be confirmed at <http://www.agc-cert.com>.



2. The Test Results of PBBs & PBDEs:

Item(s)	MDL	Result	Limit
		106	
Polybrominated Biphenyls (PBBs)			
Monobromobiphenyl	5	N.D.	Total PBBs Content <1000
Dibromobiphenyl	5	N.D.	
Tribromobiphenyl	5	N.D.	
Tetrabromobiphenyl	5	N.D.	
Pentabromobiphenyl	5	N.D.	
Hexabromobiphenyl	5	N.D.	
Heptabromobiphenyl	5	N.D.	
Octabromobiphenyl	5	N.D.	
Nonabromodiphenyl	5	N.D.	
Decabromodiphenyl	5	N.D.	
Total content	/	N.D.	
Polybrominated Diphenylethers (PBDEs)			
Monobromodiphenyl ether	5	N.D.	Total PBDEs Content <1000
Dibromodiphenyl ether	5	N.D.	
Tribromodiphenyl ether	5	N.D.	
Tetrabromodiphenyl ether	5	N.D.	
Pentabromodiphenyl ether	5	N.D.	
Hexabromodiphenyl ether	5	N.D.	
Heptabromodiphenyl ether	5	N.D.	
Octabromodiphenyl ether	5	N.D.	
Nonabromodiphenyl ether	5	N.D.	
Decabromodiphenyl ether	5	N.D.	
Total content	/	N.D.	
Conclusion	/	Pass	/

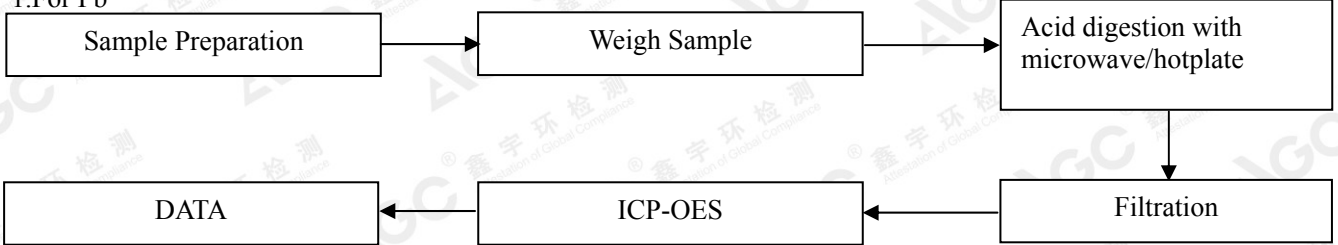
Note: N.D. = Not Detected or less than MDL
 MDL = Method Detection Limit

The results shown in this test report refer only to the sample(s) tested unless otherwise stated and the sample(s) are retained for 30 days only. The document is issued by AGC, this document cannot be reproduced except in full with our prior written permission. The more details and the authenticity of the report will be confirmed at <http://www.agc-cert.com>.

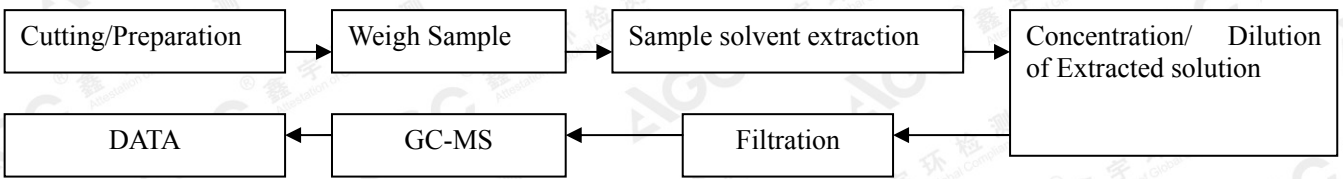


Test Flow Chart

1.For Pb



2.For PBBs & PBDEs

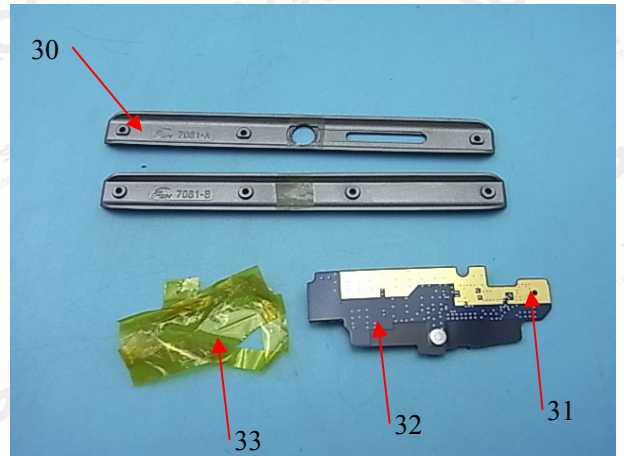
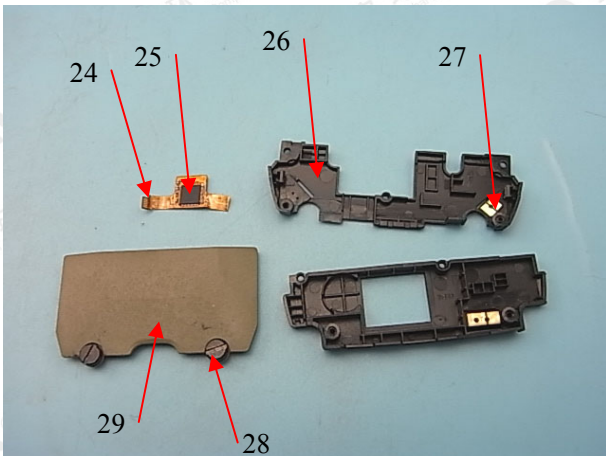
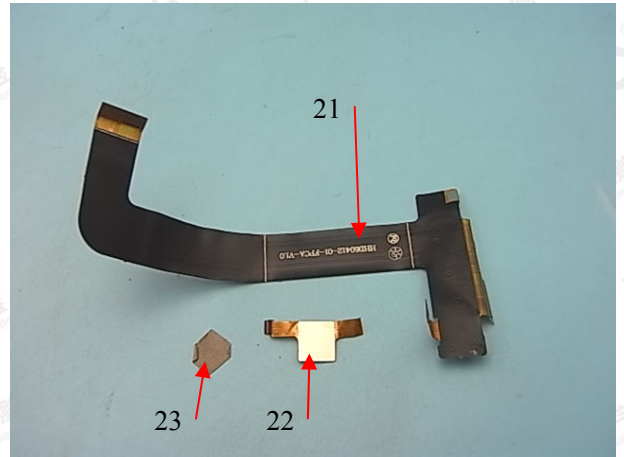
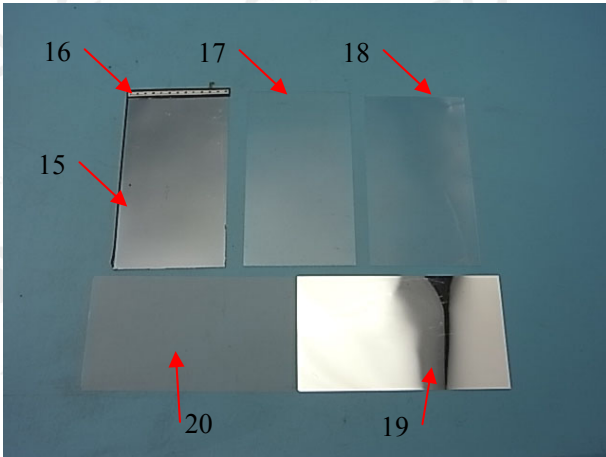
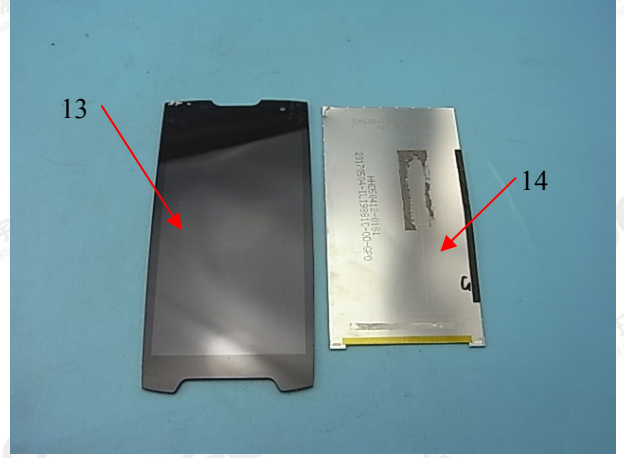
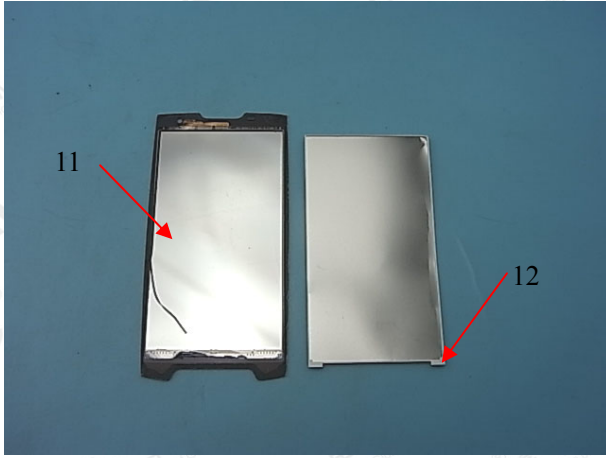


The photo of the sample



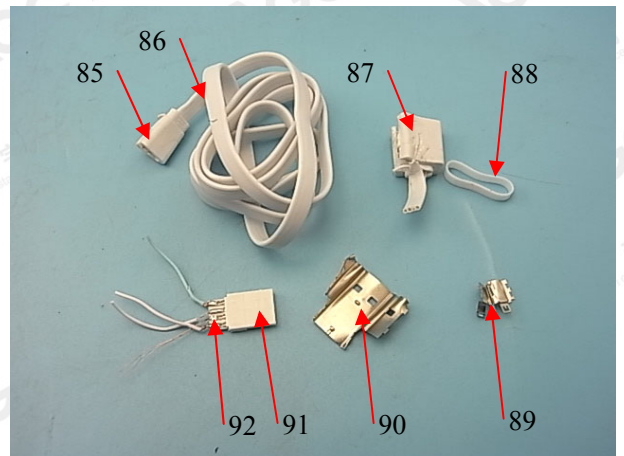
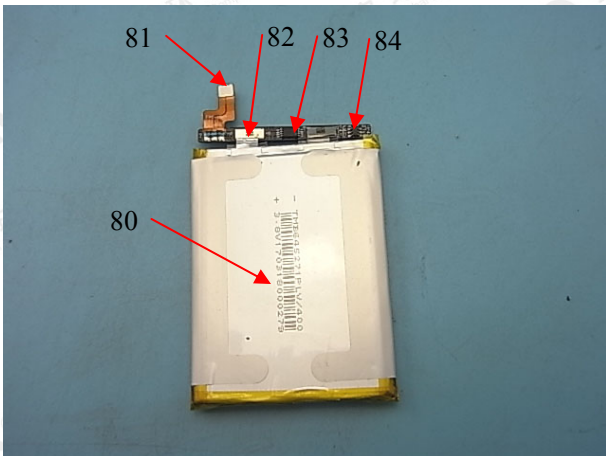
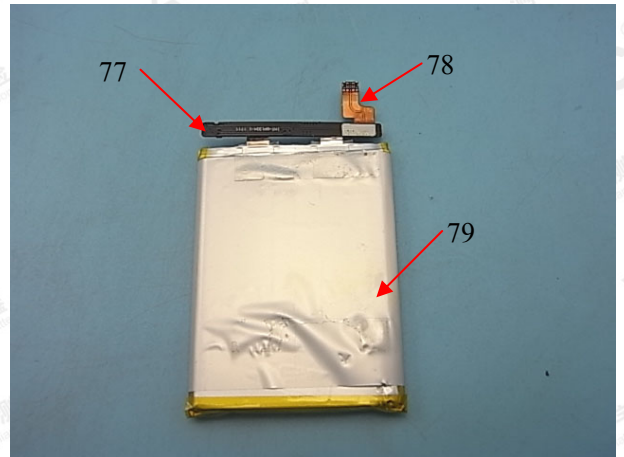
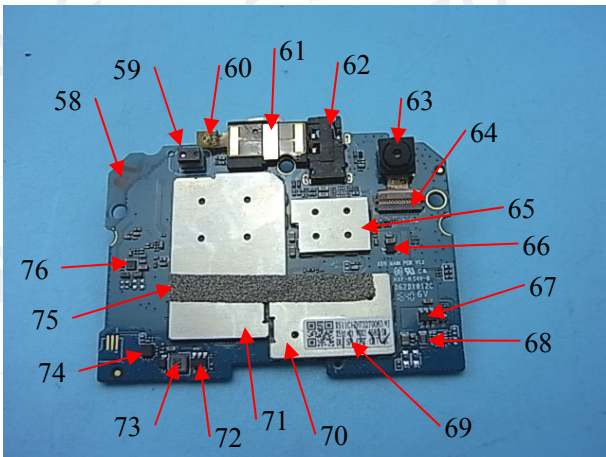
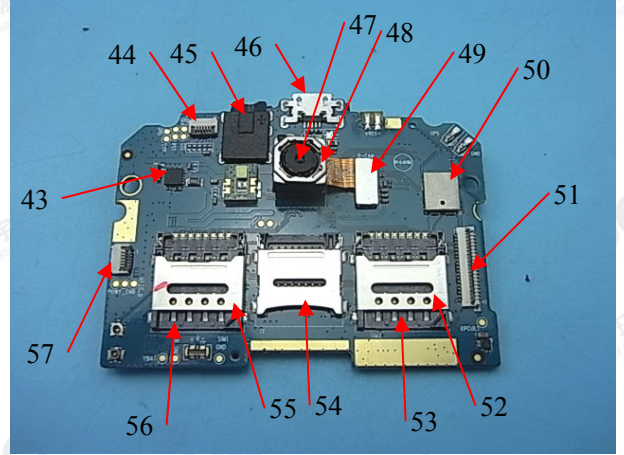
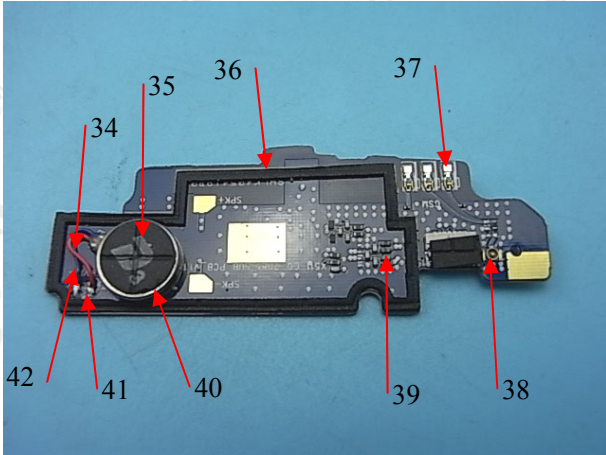
The results shown in this test report refer only to the sample(s) tested unless otherwise stated and the sample(s) are retained for 30 days only. The document is issued by AGC, this document cannot be reproduced except in full with our prior written permission. The more details and the authenticity of the report will be confirmed at <http://www.agc-cert.com>.





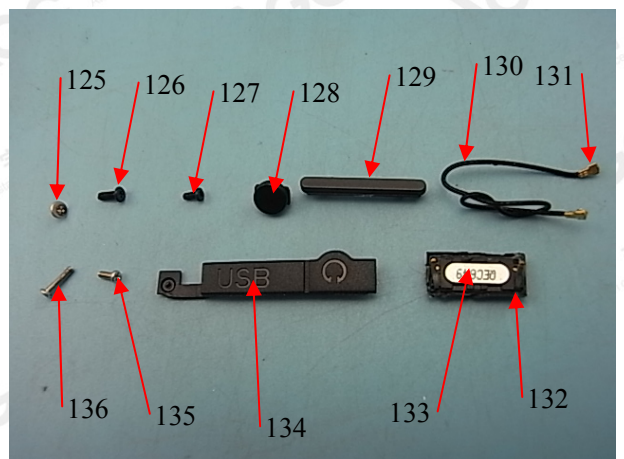
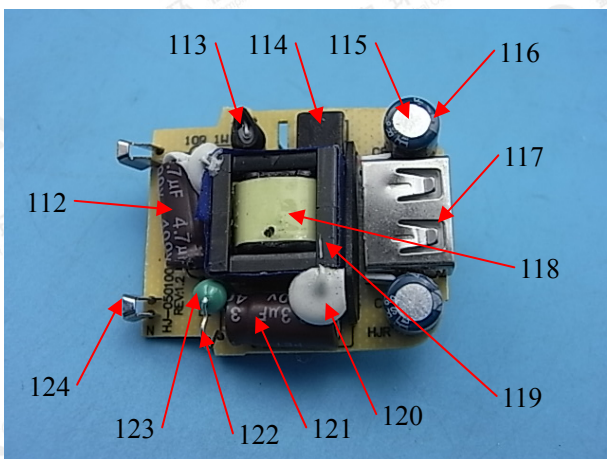
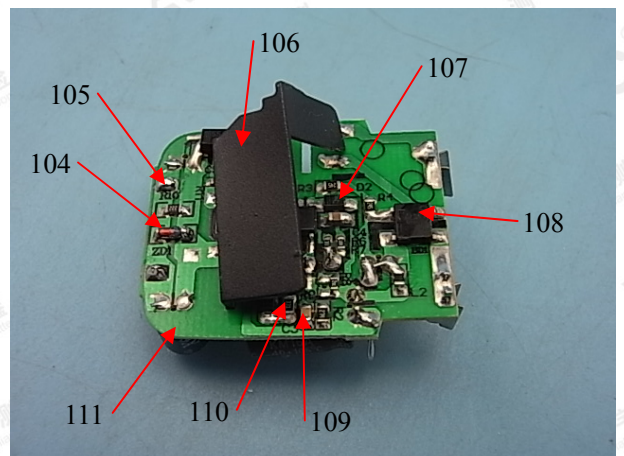
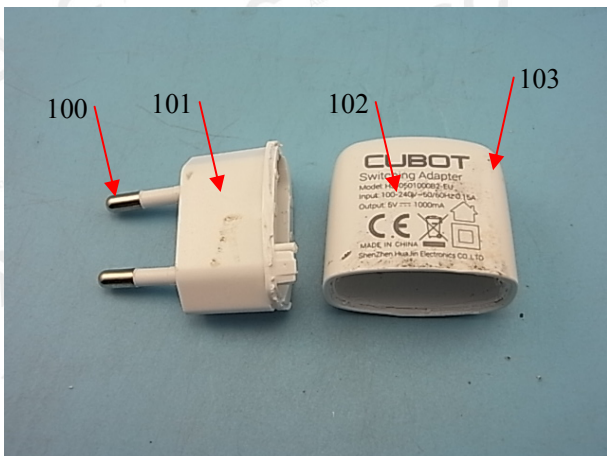
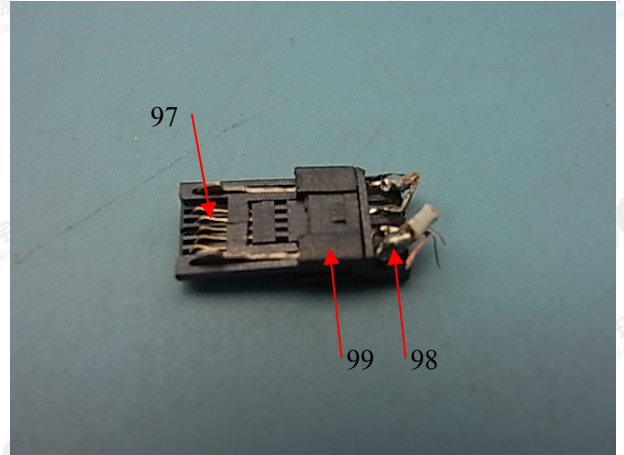
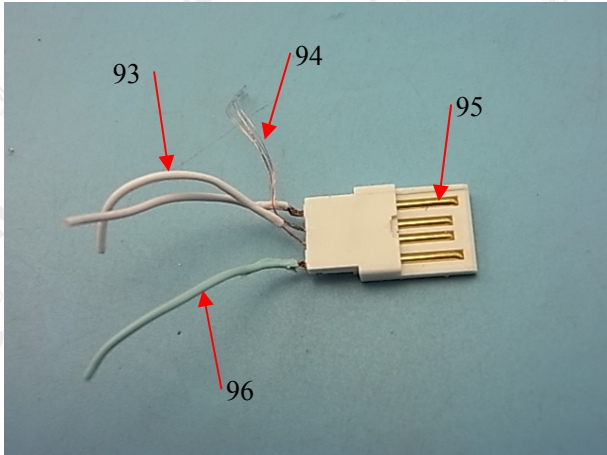
The results shown in this test report refer only to the sample(s) tested unless otherwise stated and the sample(s) are retained for 30 days only. The document is issued by AGC, this document cannot be reproduced except in full with our prior written permission. The more details and the authenticity of the report will be confirmed at <http://www.agc-cert.com>.





The results shown in this test report refer only to the sample(s) tested unless otherwise stated and the sample(s) are retained for 30 days only. The document is issued by AGC, this document cannot be reproduced except in full with our prior written permission. The more details and the authenticity of the report will be confirmed at <http://www.agc-cert.com>.





AGC2017101600452

AGC authenticates the photo only on original report

*** End of Report ***

The results shown in this test report refer only to the sample(s) tested unless otherwise stated and the sample(s) are retained for 30 days only. The document is issued by AGC, this document cannot be reproduced except in full with our prior written permission. The more details and the authenticity of the report will be confirmed at <http://www.agc-cert.com>.



No.17 C